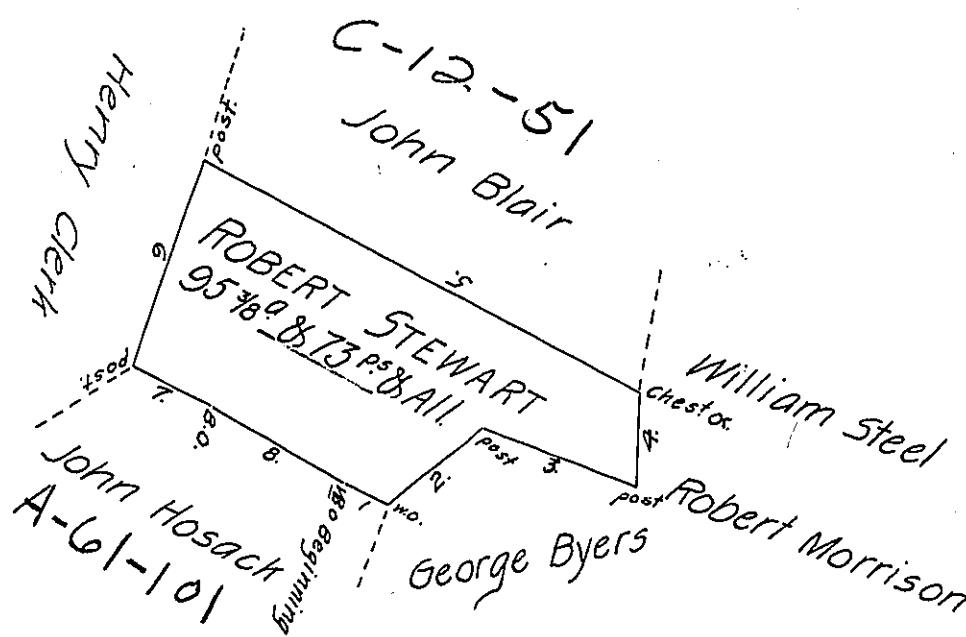


Beginning at a Notched  
Black Oak a Corner of John  
Hosack's Land and thence the  
Courses & Distances as follows  
VIZ,

- N<sup>o</sup> 1. S. 61° E. 14.3 ps. W.O.
- N<sup>o</sup> 2. N. 54½° E. 52.2 ps. post
- N<sup>o</sup> 3. S. 69½° E. 72.8 ps. post
- N<sup>o</sup> 4. N. 2½° E. 39 ps. Chest or
- N<sup>o</sup> 5. N. 60½° W. 214.4 ps. post
- N<sup>o</sup> 6. S. 19¾° W. 93.1 ps. post
- N<sup>o</sup> 7. S. 61° E. 36.7 ps B.O
- N<sup>o</sup> 8. S. 58¾° E. 68.3 ps. W.O, the place of Beginning



Situated in Cumberland Township, York County, and Surveyed the the  
5<sup>th</sup> day of May 1785, in pursuance of a Warrant dated 4<sup>th</sup> day of February 1785  
By Moses M<sup>c</sup>Clean, D. S.  
To John Lukens, Esq<sup>r</sup> Surveyer General.

IN TESTIMONY that the above is a copy of the original remaining on file in  
the Department of Internal Affairs of Pennsylvania, made  
conformably to an Act of Assembly approved the 16th day of  
February, 1833, I have hereunto set my Hand and caused  
the Seal of said Department to be affixed at Harrisburg,  
this fifth day of December 1906.

*Loane D Brown*  
Secretary of Internal Affairs.